

User Guide For Students

Welcome to AMBOSS

AMBOSS Library	2
Comprehensive Content	2
Dynamic features	2
AMBOSS Qbank	2
Exam Mode & Study Mode	3
Qbank Features	3
How To	3
Smart Study Tools	4
Make the most of Anki integration	4
Practice diagnoses with image overlays	4
Clerkship survival guide	4
Study Plans	4
Evaluate your own learning progress	4
AMBOSS's Got You Covered For All Examination Types	5
USMLE	5
NBME® Shelf	5
IFOM exam	5
SMLE	5
Custom Study Plans	5
Access AMBOSS	6

AMBOSS Library

Discover our interactive medical library covering all systems with over 1200 preclinical and clinical articles with thousands of high-quality medical imaging, illustrations, and charts.

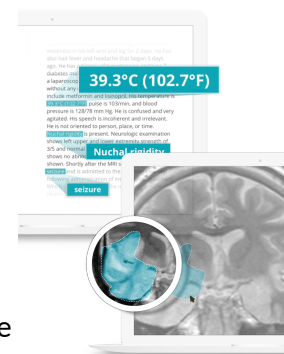
Comprehensive Content

- AMBOSS gives you access to the entire knowledge of a comprehensive medical course book aligned with international examination standards.
- The articles contain information on preclinical and clinical knowledge, designed in the most accessible way to prepare students each step of the way.
- Browse the Basic Science Section of the Library. There, you'll find Articles covering traditionally defined disciplines like anatomy, behavioral sciences, biochemistry, biostatistics and epidemiology, microbiology, pathology, pharmacology, and physiology, as well as interdisciplinary areas like genetics, aging, immunology, nutrition and molecular and cell biology.

Topics can be approached from two vantage points: by discipline or by system.

Dynamic features

- **Built-in highlights** can be turned on, to scan and focus on relevant information
- **Overlays** help to retain more information using thousands of charts, x-rays and images with digital overlays that illustrate key diagnostic points, structures and systems.
- **High-yield** mode condenses articles down to the most high-yield info. Hover over any term for a brief definition and click to read the full article.
- **Smart zoom** works like a digital microscope and helps you take a really close look at our histology library.



You find up-to-date and accurate medical articles in our library that are peer-reviewed by a global team of more than 150 expert physicians.

AMBOSS Qbank

Discover our Question Bank (Qbank) with over 5800 questions, customizable sessions and multiple difficulty levels to choose from.

Exam Mode & Study Mode

When starting a Qbank session, either through a Study Plan or the creation of a Custom Session, there are two different question modes: Study mode and Exam mode.

The Exam mode is designed in a way to stimulate your exam. It has the same design and features that you have access to on the day of your USMLE/Shelf exam, so that you get accustomed to the layout and where everything is located in advance.

In Study mode, you can access all the features that will help you delve into the topics tested in the questions. This is how [Study Mode & Exam Mode](#) works.

Qbank Features

The Attending Tip feature helps the student find the correct answer by giving them a better grasp of the logic of the question.

Show Answer / Show All Explanations makes sure that the student will always be presented with an explanation that details why their answer is correct or wrong.

Key Info will highlight information in the question text that helps understand the focus of the case.

Notes feature allows you to take your own notes within each question. Just select the Notes button and a text box will appear above the answer options.

How To

[Creating a Qbank session](#)

[Reviewing a Qbank session](#)

[Using your Saved Questions, organized by Folder](#)

Smart Study Tools

Make the most of Anki integration

Unify your resources and connect to high-yield info instantly. With the AMBOSS add-on for Anki, your flashcards get an upgrade with pop-up explanations and links to articles from the AMBOSS Library. To download the add-on please follow the [link](#).

Practice diagnoses with image overlays

Spot diagnosis more quickly using thousands of charts, X-rays, and images with digital overlays. You want to know how our image overlay feature works? Check it out right [here](#).

Clerkship survival guide

Excel on the Wards With the Clerkship Guides

Topics include:

- Being prepared for your first day of every rotation
- How to pre-round, take notes, present patients, and impress your attendings
- Top 10 topics for every rotation
- What to expect and how to study effectively for your Shelf exams

Explore clerkship resources [here](#).

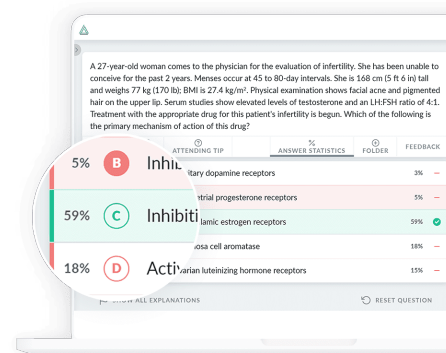
Study Plans

The Study Plans allow you to study in an organized way and to easily follow a certain schedule. Study Plans include several premade exam blocks broken down by system. These plans are usually suitable if you have more study time or prefer to work through subject areas. You can find all the question blocks in the [Study Plan](#) section on the left sidebar.

Another option is to create your own [Custom Study Plan](#) directly in the Study Plans section. In order to do this, just click 'Create study plan' in the Account > Study Plans section of the platform.

Evaluate your own learning progress

You can access all your performance information and access your overall [Peer Group Comparison](#) and [Study Recommendations](#) in this section of the platform.



AMBOSS's Got You Covered For All Examination Types

The library as well as the Qbank cover tailored learning courses to prepare you for any exam type.

USMLE

The AMBOSS Qbank and Library helps you to prepare for every aspect of their USMLE Step exams. The questions are regularly updated to meet USMLE requirements and emulate NBME-style to give you the most realistic exam experience possible. Go to the [USMLE](#) page to learn more. Or visit [USMLE Step 1](#), [USMLE Step 2 CK](#) and [USMLE Step 3](#) for more information.

NBME® Shelf

The knowledge library features more than 1200 articles designed for in-depth exam study as well as point-of-care reference when you're with patients. The Qbank offers a robust study resource with over 5800 challenging questions for all 9 shelf exams to ensure you are fully prepared. Go to the [NBME Shelf](#) exam page to learn more.

IFOM exam

Our articles and questions have been optimized according to the guidelines of the National Board of Medical Examiners (NBME), which drafts and administers the IFOM exams. Study efficiently and effectively with advanced features to help tailor your learning experience to exactly what you need to know. Go to the [IFOM](#) exam page to learn more.

SMLE

If you are studying for the SMLE, AMBOSS is here to provide you with all the necessary learning materials and study plans. It lays out all the topics covered in the exam, with each one linked to an AMBOSS article to help you progress through the curriculum. Download the SMLE study plan [here](#).

Access AMBOSS

1. Create your AMBOSS account following this [link](#).
2. Activate your license by checking your emails for instructions or by contacting your faculty.
3. Use AMBOSS in your browser or download the app for your mobile device. [Apple Store](#) and [Google Play](#).

The AMBOSS Knowledge and Qbank apps were designed to provide students and physicians instant medical knowledge and guidance online and offline.